

Martins Lookout Loop Walk

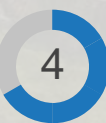


6 hrs 30 mins

Hard track

13.8 km Circuit

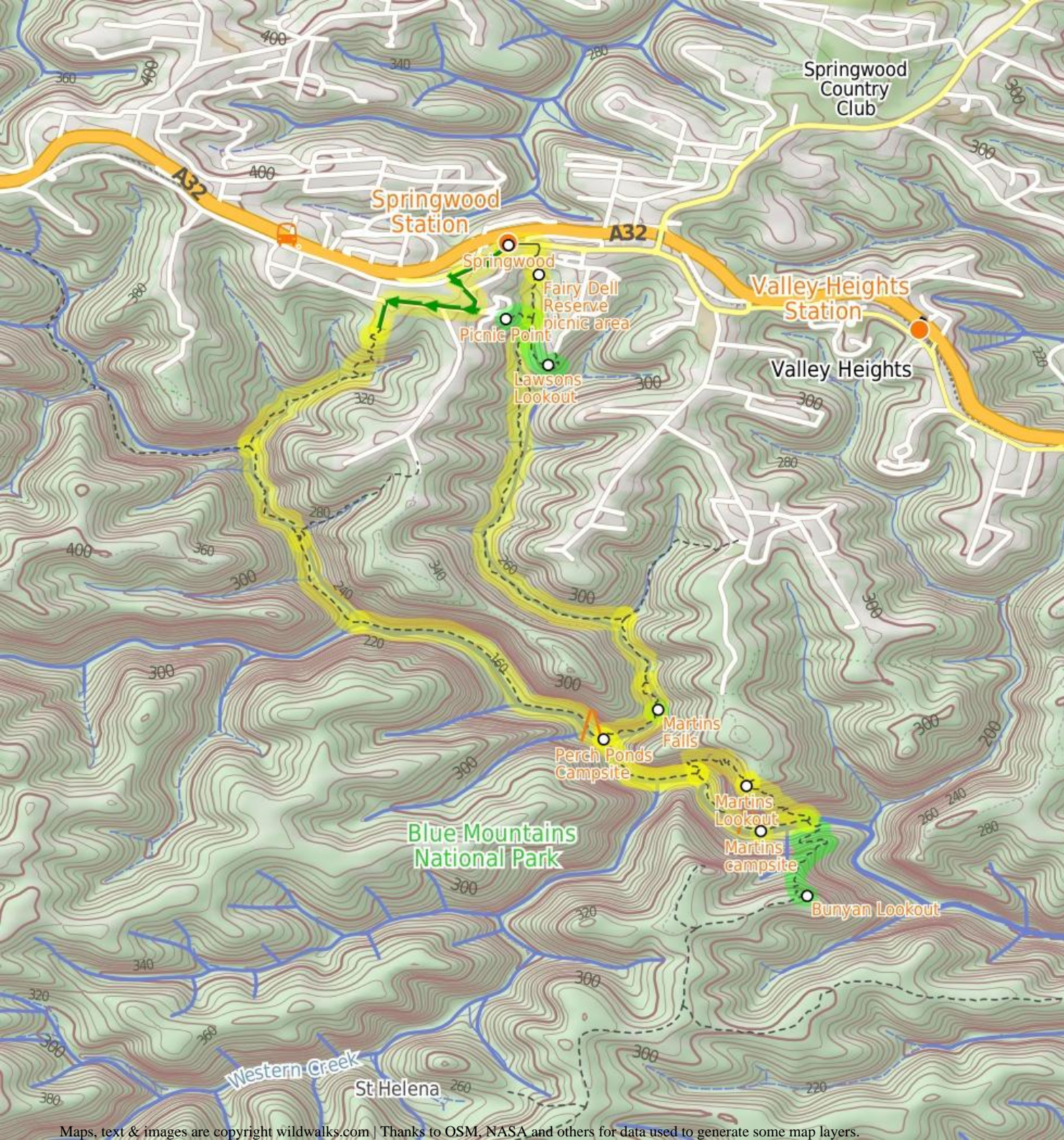
▲ 842m



This walk offers a magnificent way to explore the Sassafras Gully, enjoying the lush valleys and deep bushland, as well as the panoramic Martins Lookout. This walk has much to offer, with many views to impress before returning to Springwood Train Station.

121m

Blue Mountains National Park



Springwood

Springwood, along the Great Western Highway, is the second largest town in the Blue Mountains. Springwood also takes the title for the oldest railway station in the Blue Mountains. There are a variety of shops in Springwood, with quite a few cafes, bakeries and two historic hotels. Springwood was named by Governor Macquarie, when his wife and he stopped for water from a deep glen spring, in 1815. It seems aptly named, with many springs and creeks leading away from the ridge at Springwood, including Sassafras Gully, Magdala Creek and Glenbrook Creek. [More info.](#)

Perch Ponds Campsite

Perch Ponds is a lovely waterhole, with a clearing suitable to pitch a tent, located at the junction of Magdala Creek and Glenbrook Creeks. The meeting of the two creek provides a relaxing sound of rushing water and a cool spot to rest on warmer days. The campsite is a flat area above the pool marked with a fire scar. A great shady and quiet area for a camp. There are no facilities and water from the creek needs to be treated.

Martins campsite

Martins campsite is an unofficial camping area beside Glenbrook Creek. The camping area is a sandy clearing, opposite cliffs on the other bank. The camping area is situated below Martins Lookout, with Bunyan Lookout up the ridge on the opposite hillside. A quiet and shaded location which can give a great night's sleep.

Bunyan Lookout

Bunyan Lookout is an large, unfenced sandstone platform overlooking the Glenbrook Creek valley. Behind the lookout, there is a small sandy clearing, big enough for a few tents. The lookout spans across Glenbrook Creek and sandstone cliffs of the valley.

Martins Lookout

Martin's Lookout is an unfenced view on the rim of the plateau, south of Valley Heights. There are views across and up the Glenbrook Creek, and to the Lost Worlds lookout (on the opposite cliffs) which features a small white crucifix. This cross is in memory of Rev. Raymer who was an avid bushwalker in the area. The plaque in the rock at Martin's Lookout is directly opposite this cross.

Before You walk

Bushwalking is fun and a wonderful way to enjoy our natural places. Sometimes things go bad, with a bit of planning you can increase your chance of having an enjoyable and safer walk. Before setting off on your walk check

- 1) Weather Forecast ([BOM Central Tablelands District](#))
- 2) Fire Dangers ([Greater Sydney Region](#))
- 3) Park Alerts ([Blue Mountains National Park](#))
- 4) Research the walk to check your party has the skills, fitness and equipment required
- 5) Agree to stay as a group and not leave anyone to walk solo

Think before you TREK

The 'Think before you TREK' program developed by NSW Police & NPWS promotes the benefits of planning ahead for your bushwalking trip by using an easy to remember acronym:

T Take adequate supplies of food, water, navigation and first aid equipment.
R Register your planned route and tell friends and family when you expect to return.
E Emergency beacon (PLB's) should be carried on walks with significant gaps in mobile coverage (check terrain profile).
K Keep to your planned route and follow the map and walking trails.

Topo Maps


The maps provided on wildwalks are helpful, but there are times where you may need maps covering a broader area. Maps that cover this walk include;

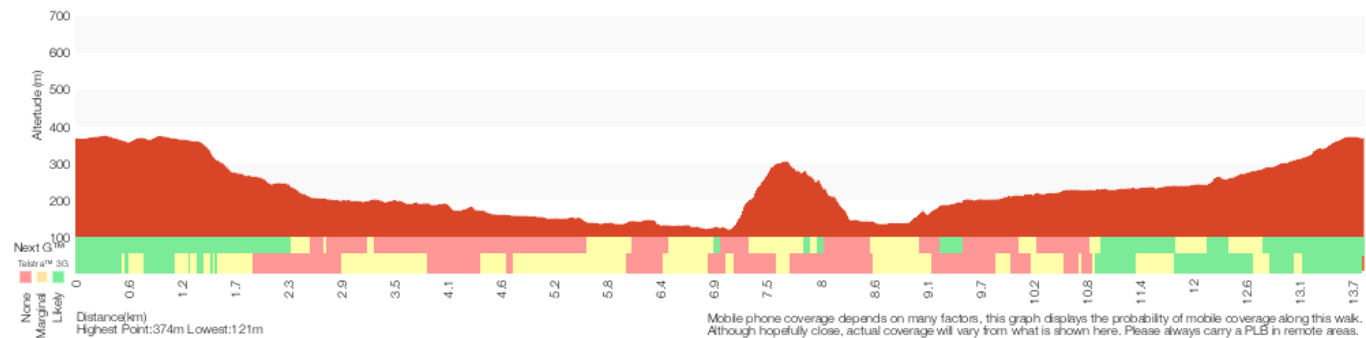
1:25 000 Map Series:90304S SPRINGWOOD

1:100 000 Map Series:9030 PENRITH

Grade

This walk has been graded using the AS 2156.1-2001. The overall grade of the walk is determined by the highest classification along the whole track.

 Grade 4/6 Hard track	
Length	13.8 km Circuit
Time	6 hrs 30 mins
Quality of track	Rough track, where fallen trees and other obstacles are likely (4/6)
Signs	Minimal directional signs (4/6)
Experience Required	No experience required (1/6)
Weather	Weather generally has little impact on safety (1/6)
Infrastructure	Limited facilities (such as cliffs not fenced, significant creeks not bridged) (4/6)



Are you ready to have fun?

Please ensure you and your group are well prepared and equipped for all possible hazards and delays. Check park closures, weather information and Fire Danger Rating before setting out. Optional side trips and alternate routes noted are not included in this walk's overall grade, length or time estimate. Please allow extra time for resting and exploring areas of interest. The authors, staff and owners of wildwalks take care in preparing this information but will not accept responsibility for any inconvenience, loss or injury you may experience. Please take care, have fun - Happy Walking.

Getting there You can get to Springwood Station (gps: -33.6991, 150.5638) by car, train or bus. Car: There is free parking available.

This is a circuit, so you will finish back at the start.

Find up to date and more information including; travel directions, weather, park closures and walker feedback at <http://wild.tl/mlw>

0 | Springwood

Springwood, along the Great Western Highway, is the second largest town in the Blue Mountains. Springwood also takes the title for the oldest railway station in the Blue Mountains. There are a variety of shops in Springwood, with quite a few cafes, bakeries and two historic hotels. Springwood was named by Governor Macquarie, when his wife and he stopped for water from a deep glen spring, in 1815. It seems aptly named, with many springs and creeks leading away from the ridge at Springwood, including Sassafras Gully, Magdala Creek and Glenbrook Creek. [More info.](#)

0 | Springwood Station

(1.2 km 23 mins) From Springwood Station, the walk crosses the pedestrian crossing and turns right, passing the shop fronts. The walk continues along Macquarie Rd and turns left onto Homedale St. At the bottom of Homedale St, the walk turns right onto Valley Rd, and then left onto Sassafras Gully Rd. The walk continues to the bottom of Sassafras Gully Rd, in front of house number 18.

1.19 | No. 18 Sassafras Gully Rd

(1.4 km 33 mins) Veer left: From the end of Sassafras Gully Rd, the walk heads down the hill along the fenceline of house No. 18. The walk passes two signs for 'Sassafras Gully' as it winds to the right at a rock outcrop and down to an unsignposted intersection.

Turn left: From the intersection, the walk heads down the hill, keeping the rock outcrop on the left. The walk passes a track on the left (which heads over the rock outcrop) and turns down the hill. As the walk winds down the hill, a few smaller tracks are passed before nearing a creek. The walk crosses the creek a few times as it heads down the gully to a larger creek junction. The walk crosses the junction, then follows the larger gully, soon coming to a 'Sassafras Gully Rd' sign (pointing back the way you came).

2.59 | Int. Victory and Sassafras Gully Trks

(3.1 km 1 hr 5 mins) Continue straight: From the intersection, the walk heads down across the creek in the direction of the 'To Wiggins Track' sign. The walk winds along the hillside, keeping the creek on the right, passing a blue track marker which directs the walk to the other side of the creek. The walk now keeps the creek on the left as it winds up to a 'Perch Ponds, Springwood Stn' sign.

Veer right: From the intersection, the walk follows the direction of the 'Perch Ponds' sign across the hillside. The walk soon nears the creek on the left, then undulates above it for a short while. The track crosses a steeply banked creek junction, then continues following the main creek (which is on the left). The walk stays near this creek, coming into a campground clearing with large boulders.

Continue straight: From the campground clearing, the walk exits the clearing, keeping the main creek to the right, and immediately crosses a side creek.

The walk keeps the main creek on the right as it slowly climbs the hillside. The track then heads downhill, passing under a few rock overhangs and soon entering the campground clearing of 'Perch Ponds'.

5.69 | Perch Ponds Campsite

Perch Ponds is a lovely waterhole, with a clearing suitable to pitch a tent, located at the junction of Magdala Creek and Glenbrook Creeks. The meeting of the two creeks provides a relaxing sound of rushing water and a cool spot to rest on warmer days. The campsite is a flat area above the pool marked with a fire scar. A great shady and quiet area for a camp. There are no facilities and water from the creek needs to be treated.

5.69 | Perch Ponds camping area

(1.2 km 27 mins) Continue straight: From the intersection, the walk follows the direction of the 'Martins Lookout' sign across the campground clearing to an arrow bolted to a tree. The walk follows this arrow down the hill and across the creek, and then follows creek, keeping it on the right. The walk leads up the hill away from the creek to a signposted intersection for 'Martins Lookout'.

Veer right: From the intersection, the walk follows direction of the 'Long Track' sign, down the hill. The track winds down near the creek and passes a sandy beach access before soon entering a second clearing.

6.86 | Martins campsite

Martins campsite is an unofficial camping area beside Glenbrook Creek. The camping area is a sandy clearing, opposite cliffs on the other bank. The camping area is situated below Martins Lookout, with Bunyan Lookout up the ridge on the opposite hillside. A quiet and shaded location which can give a great night's sleep.

6.86 | Martins camping area

(230 m 6 mins) Turn left: From the fireplace, the walk heads along the creek bank, keeping the creek near and on the right. The walk then tends left, up the hill to the intersection and pole without a sign.

7.09 | Optional sidetrip to Bunyan Lookout

(960 m 38 mins) Veer right: From the intersection, the walk follows the 'Bunyan Lk' post down the stairs. The walk soon meets the creek and turns left, following the creek for a short distance before crossing at an opening in the shrubs around the creek. From here, the walk follows the cairns (rock stacks) across creek flats before climbing the hill to the base of a small cliff line. At one point beneath the cliff line, the walk ducks through a hole in the rock, then winds up through boulders, following more cairns. The walk continues up the hill, passing through a few more rocky outcrops to reach the informal, unfenced Bunyan Lookout, in a clearing near the cliff line. At the end of this side trip, retrace your steps back to the main walk then Turn right.

7.09 | Bunyan Lookout

Bunyan Lookout is an large, unfenced sandstone platform overlooking the Glenbrook Creek valley. Behind the lookout, there is a small sandy clearing, big enough for a few tents. The lookout spans across Glenbrook Creek and sandstone cliffs of the valley.

7.09 | Int. Martins Lookout and Bunyan Lookout Trk

(530 m 26 mins) Veer left: From the intersection, the walk heads up the stairs and soon begins zigzagging up the hillside for a short time, coming to be under a cliff line. The track heads up stairs which head through the cliffs and winds steeply up to the next set of stairs. The track heads under many wonderful rock overhangs, as it winds its way using stairs to come up to Martins Lookout.

7.62 | Martins Lookout

Martin's Lookout is an unfenced view on the rim of the plateau, south of Valley Heights. There are views across and up the Glenbrook Creek, and to the Lost Worlds lookout (on the opposite cliffs) which features a small white crucifix. This cross is in memory of Rev. Raymer who was an avid bushwalker in the area. The plaque in the rock at Martin's Lookout is directly opposite this cross.

7.62 | Martins Lookout

(1.7 km 1 Hr) Turn right: From the intersection, the walk heads away from the cliff edge, keeping the view on the left. The walk continues along the hillside and comes to a three-way marked with a pole (without a sign- on the left).

Turn left: From the intersection, the walk heads towards the bottom of the rocky outcrop. The track heads across the hillside under the rocky outcrop and then turns left, descending the hill steeply. The walk winds down the hill for a short time to a signposted intersection.

Turn right: From the intersection, the walk follows the direction of the 'Springwood Stn Via...' sign across the hillside. The walk keeps the valley to the left as it winds down near the creek, on the left. The walk continues down across the creek to immediately lead up the hill into the clearing of Perch Ponds. The walk crosses the clearing to the signs at the other side.

Turn right: From Perch Ponds, the walk follows the 'Magdala Gully-Fairy Dell' sign, up the hill. The track winds up the hillside for a short time, keeping the creek on the right, then comes to a 'Martins Falls' sign.

9.33 | Optional sidetrip to Behind Martins Falls

(30 m 1 mins) Turn right: From the intersection, the walk heads to the left of the 'Martins Falls' sign (towards the falls). The walk skirts around the edge of the valley, coming under the rock overhang of the falls, and then arriving behind the falls. At the end of this side trip, retrace your steps back to the main walk then Turn right.

9.33 | Martins Falls

Martins Falls are at a rock overhang on Magdala Creek, near Springwood, almost 400m upstream from the Glenbrook Creek junction. The water falls off a rock platform, over the overhang into a large pond. There is a faint track leading behind the falls, giving a different perspective of the pond and falls - extra care is required. This is a lovely area to enjoy the cool temperatures on warmer days, and is more spectacular after recent rain.

9.33 | Int. Martins Falls and Magdala Ck trks

(3.5 km 1 hr 14 mins) Continue straight: From the intersection, the walk heads up the gully, keeping the creek to the right. The track winds for a short time, passing a few rocky overhangs as it climbs to a 'Magdala Falls' sign.

Continue straight: From the intersection, the walk keeps the valley on the right as it heads up the hill. The walk winds up the hill, crossing the creek after some time. The walk continues up the hill, now with the creek on the left, to an intersection, with arrows engraved in the rock.

Turn left : From the intersection engraved with arrows, the walk heads down across the creek. The track then keeps the Magdala Creek on the left before crossing for the first of many times. The walk continues up along Magdala Creek and crosses a rock shelf below some small falls, coming to a 'Lawson's Lookout' sign.

12.86 | Optional sidetrip to Lawsons Lookout

(410 m 11 mins) Turn right: From the intersection, the walk follows the direction of the 'Lawsons Lookout' signs, up the hill. The track heads up to a rocky outcrop, where the track turns back on itself and steps through some bushes to the rocky surface of the lookout. At the end of this side trip, retrace your steps back to the main walk then Turn right.

12.86 | Lawsons Lookout

Lawsons Lookout, in Springwood, Blue Mountains, is an unfenced rockshelf overlooking the wonderful Magdala Creek valley. The lookout is most easily accessed from Raymond Rd.

12.86 | Int. Lawsons Lookout Trk and Fairy Dell Trk

(140 m 3 mins) Continue straight: From the intersection, the walk follows the direction of the 'Springwood Station' sign up the hill, keeping the creek on the left of the track. The track stays close to the creek as it climbs the hill, soon coming to a signposted intersection next to the bridge.

13 | Optional sidetrip to Picnic Point

(160 m 6 mins) Turn left: From the intersection, the walk crosses the bridge, following the 'Picnic Point' signs. The walk immediately climbs many stairs which wind up to a the picnic shelter and grass area of Picnic Point. At the end of this side trip, retrace your steps back to the main walk then Turn left .

13 | Picnic Point

Picnic Point, in Springwood, Blue Mountains, is a quiet, grassy clearing tucked behind the houses above Magdala Creek. The area has a gazebo, picnic table and water tank (water needs to be treated). The clearing has a track leading down to many popular walks, with Lawson's Lookout and Fairy Dell Reserves nearby.

13 | Int. Fairy Dell and Picnic Point Tracks

(390 m 9 mins) Continue straight: From the intersection, the walk follows the 'Fairy Dell' signs, keeping the creek on the left. The walk winds up the hill, passing a vandalised building (which has since been reported as demolished by another walker), and continuing up more stairs into a grassy area with picnic tables.

13.39 | Fairy Dell Reserve picnic area

Fairy Dell Reserve picnic area is a quiet and shady terraced garden at the head of the Magdala Gully. Fairy Dell is situated just south of Springwood in the Lower Blue Mountains. The picnic area has numerous tables, parking and a grassy area for the kids to play. The Fairy Dell Reserve Picnic area is also the starting point for a number of walks down to Magdala Creek, Picnic Point and nearby Lawson Lookout.

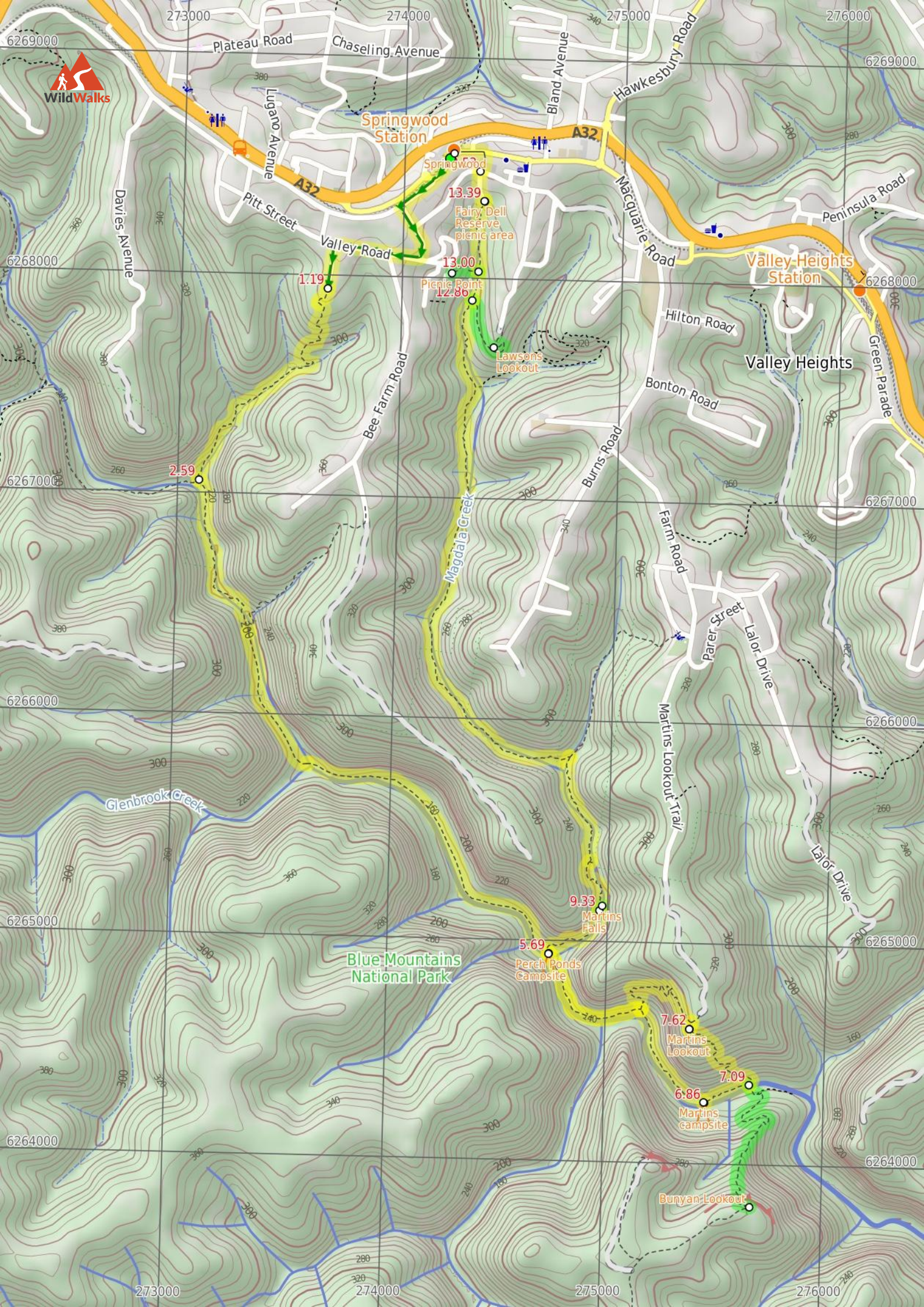
13.39 | Fairy Dell Reserve picnic area

(150 m 3 mins) Veer right: From Fern Dell Reserve picnic area, the track heads up the hill in the opposite direction to the 'Sassafras Gully' arrow on the blue sign. The track reaches the end of a small road, and heads up this road to the intersection with Springwood Ave, next to house number 51.

13.53 | Int. Springwood Ave and Fairy Dell Reserve

(270 m 5 mins) Continue straight: From the intersection, the walk heads across the road and up through the car park. The walk continues up to the main road, Macquarie Rd, and turns left. The walk follows the shop fronts for about 150 metres, then crosses the road at the pedestrian crossing opposite Springwood Station.





Summary navigation sheet for the Martins Lookout Loop Walk



km	From	Up/Dwn	Length	Initial directions (Use full tracknotes and maps for more detail)
Start	Springwood Station -33.6991,150.5638 (GR Springwood, 742685)	35 -38	1.2 km 23 mins	From Springwood Station, the walk crosses the pedestrian crossing and turns right, passing the shop fronts.
1.19	No. 18 Sassafras Gully Rd -33.7044,150.5578 (GR Springwood, 737679)	28 -186	1.4 km 33 mins	Veer left: From the end of Sassafras Gully Rd, the walk heads down the hill along the fenceline of house No.
2.59	Int. Victory and Sassafras Gully Trks -33.7123,150.5515 (GR Springwood, 731671)	80 -147	3.1 km 1 hr 5 mins	Continue straight: From the intersection, the walk heads down across the creek in the direction of the 'To Wiggins Track' sign.
5.69	Perch Ponds camping area -33.7317,150.5686 (GR Springwood, 747649)	51 -67	1.2 km 27 mins	Continue straight: From the intersection, the walk follows the direction of the 'Martins Lookout' sign across the campground clearing to an arrow bolted to a tree.
6.86	Martins camping area -33.7378,150.5762 (GR Springwood, 755643)	13 -14	230 m 6 mins	Turn left: From the fireplace, the walk heads along the creek bank, keeping the creek near and on the right.
7.09	Int. Martins Lookout and Bunyan Lookout Trk -33.7371,150.5784 (GR Springwood, 757644)	222 -25	960 m 38 mins	Optional sidetrip to Bunyan Lookout. Veer right: From the intersection, the walk follows the 'Bunyan Lkt' post down the stairs.
7.09	Int. Martins Lookout and Bunyan Lookout Trk -33.7371,150.5784 (GR Springwood, 757644)	180 -2	530 m 26 mins	Veer left: From the intersection, the walk heads up the stairs and soon begins zigzagging up the hillside for a short time, coming to be under a cliff line.
7.62	Martins Lookout -33.7348,150.5755 (GR Springwood, 754646)	160 -273	1.7 km 1 Hr	Turn right: From the intersection, the walk heads away from the cliff edge, keeping the view on the left.
9.33	Int. Martins Falls and Magdala Ck trks -33.7299,150.5711 (GR Springwood, 750651)	1 -2	30 m 1 mins	Optional sidetrip to Behind Martins Falls. Turn right: From the intersection, the walk heads to the left of the 'Martins Falls' sign (towards the falls).
9.33	Int. Martins Falls and Magdala Ck trks -33.7299,150.5711 (GR Springwood, 750651)	206 -105	3.5 km 1 hr 14 mins	Continue straight: From the intersection, the walk heads up the gully, keeping the creek to the right.
12.86	Int. Lawsons Lookout Trk and Fairy Dell Trk -33.7049,150.5649 (GR Springwood, 743679)	39 -11	410 m 11 mins	Optional sidetrip to Lawsons Lookout . Turn right: From the intersection, the walk follows the direction of the 'Lawsons Lookout' signs, up the hill.
12.86	Int. Lawsons Lookout Trk and Fairy Dell Trk -33.7049,150.5649 (GR Springwood, 743679)	13 -1	140 m 3 mins	Continue straight: From the intersection, the walk follows the direction of the 'Springwood Station' sign up the hill, keeping the creek on the left of the track.
13.00	Int. Fairy Dell and Picnic Point Tracks -33.7037,150.5652 (GR Springwood, 743680)	33 -2	160 m 6 mins	Optional sidetrip to Picnic Point. Turn left: From the intersection, the walk crosses the bridge, following the 'Picnic Point' signs.
13.00	Int. Fairy Dell and Picnic Point Tracks -33.7037,150.5652 (GR Springwood, 743680)	44 -5	390 m 9 mins	Continue straight: From the intersection, the walk follows the 'Fairy Dell' signs, keeping the creek on the left.
13.39	Fairy Dell Reserve picnic area -33.7009,150.5655 (GR Springwood, 744684)	21 0	150 m 3 mins	Veer right: From Fern Dell Reserve picnic area, the track heads up the hill in the opposite direction to the 'Sassafras Gully' arrow on the blue sign.
13.53	Int. Springwood Ave and Fairy Dell Reserve -33.6996,150.5653 (GR Springwood, 743685)	11 -4	270 m 5 mins	Continue straight: From the intersection, the walk heads across the road and up through the car park.